

BELLINGHAM NATIONAL BANK BUILDING

101 East Holly



Features

\$15-\$18 SF/YR + NNN

800 SF - 4,000 SF

Heart of downtown

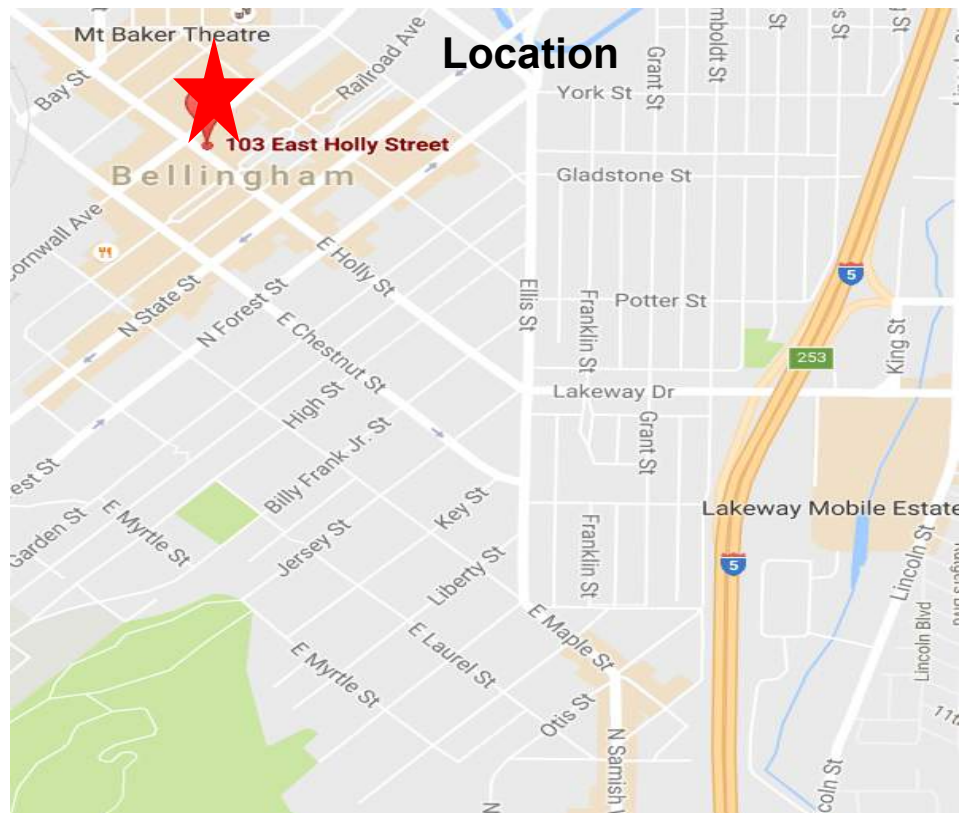
Best corner in downtown

Great traffic

I-5 Exit 253

Contact

Hannah Cano
360-676-4866
hannah@saratogacom.com



101 East Holly St



Demographic Data

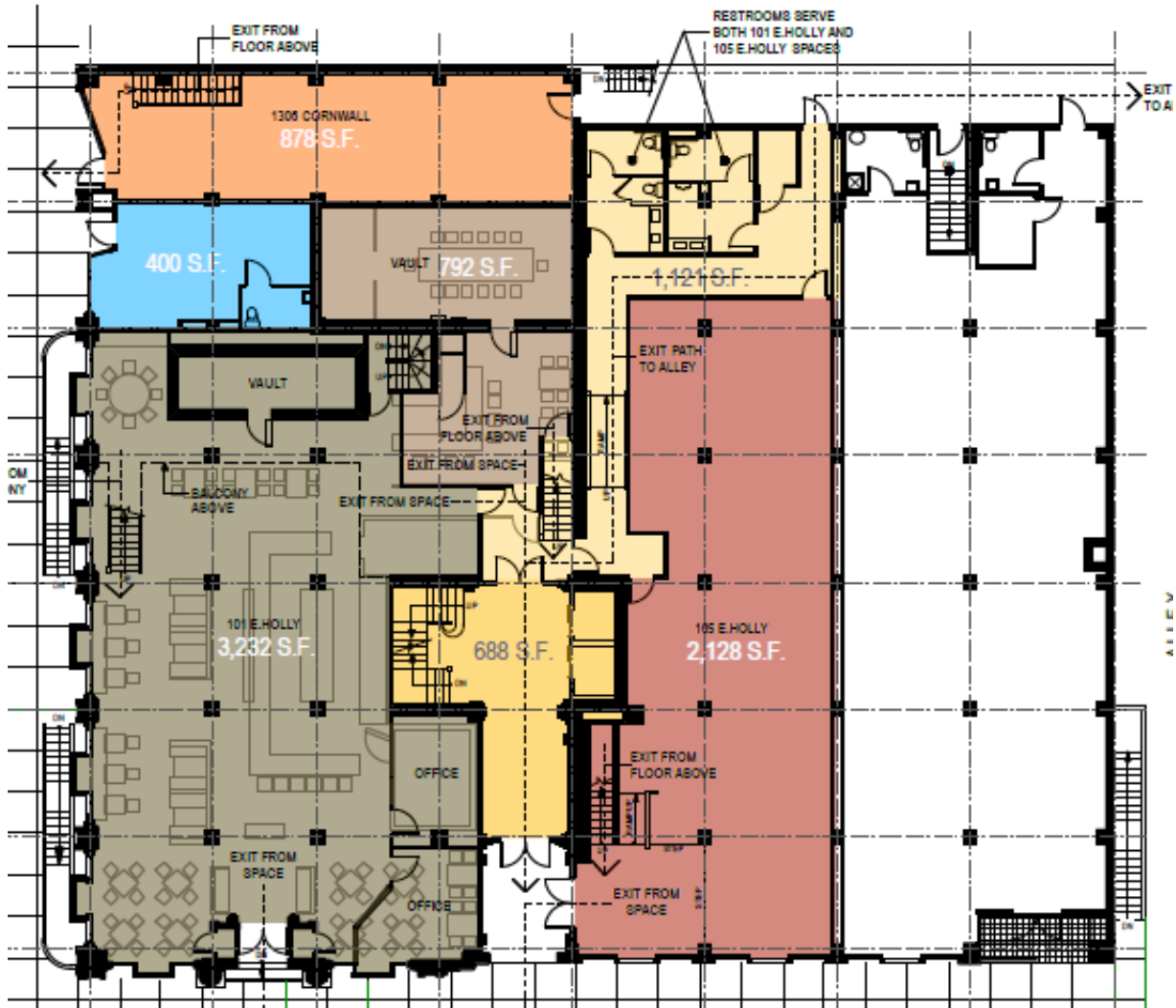
Drive Time	5 Min	10 Min	15 Min
Population			
2016 Census	15,940	62,666	94,745
2021 Projection	16,670	65,095	98,527
Households			
2016 Census	7,000	26,560	39,875
2021 Projection	7,347	27,581	41,439
Household Income			
2016 Avg Household Income	\$32,677	\$40,656	\$47,100
2016 Med Houshold Income	\$31,255	\$38,950	\$45,890
2016 Household Spending			
Total Specified Consumer spending	\$24,560	\$26,780	\$27,850
Apparel	\$1,896	\$1,637	\$1,791
Entertainment	\$1,896	\$2,202	\$2,478
Food and Alcohol	\$2,600	\$2,937	\$3,260
Household Furnishings	\$795	\$809	\$935

Contact

Hannah Cano
360-676-4866
hannah@saratogacom.com

101 East Holly St

Floorplan



Contact

Hannah Cano
360-676-4866
hannah@saratogacom.com

103 E Holly St.

'Class A' office space

316 - 1,482 square feet

\$14.00 /SF/YR + NNN

In the heart of Downtown

Near I-5

Historic Building with views



Contact

Hannah Cano
☎ 360.676.4866
✉ hannah@saratogacom.com

PROPERTY FACT SHEET

Address: 103 E Holly St.
Building: Office & Retail
Year Built: 1912
Building Size: 67,138sqft
Additional Expenses: NNN



Hannah Cano
☎ 360.676.4866
hannah@saratogacom.com

103 E Holly St.

Basement space

.....
\$6.00-\$8.00 /SF/YR + NNN
.....

3,753 square feet built out office
.....

2,144—2,800 square feet of raw
basement space
.....

In the heart of Downtown
.....

Near I-5
.....



Contact

.....
Hannah Cano
☎ 360.676.4866
✉ hannah@saratogacom.com

PROPERTY FACT SHEET

Address: 103 E Holly St.

Sprinklers: Yes

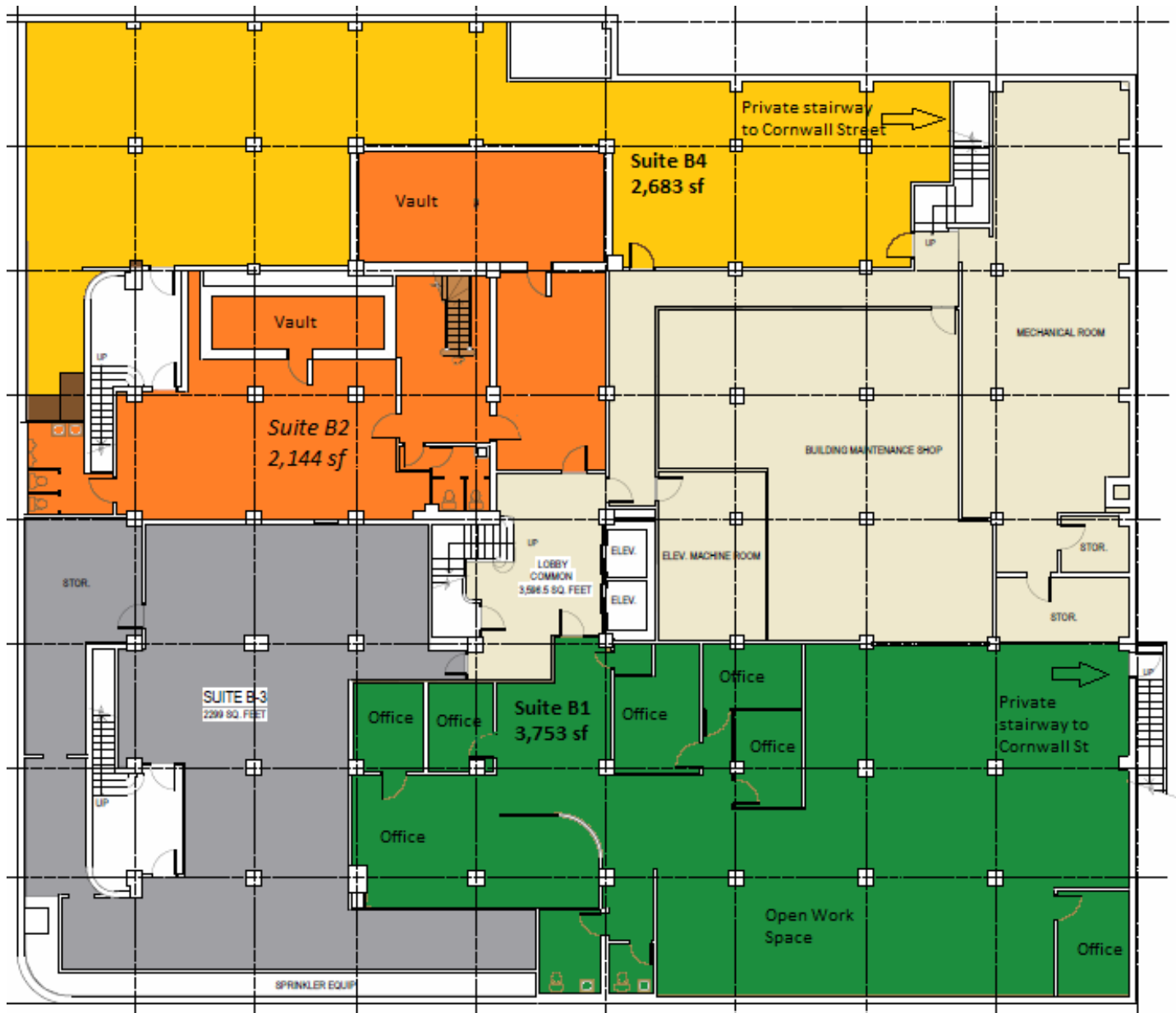
Year Built: 1912

Building Size: 67,138sqft

Additional Expenses: NNN



Hannah Cano
☎ 360.676.4866
hannah@saratogacom.com



Hannah Cano
☎ 360.676.4866
hannah@saratogacom.com