

155 12th Street, Suite 102

Blaine, WA

\$18/sf/year Modified Gross

830 Square Feet

Available Immediately

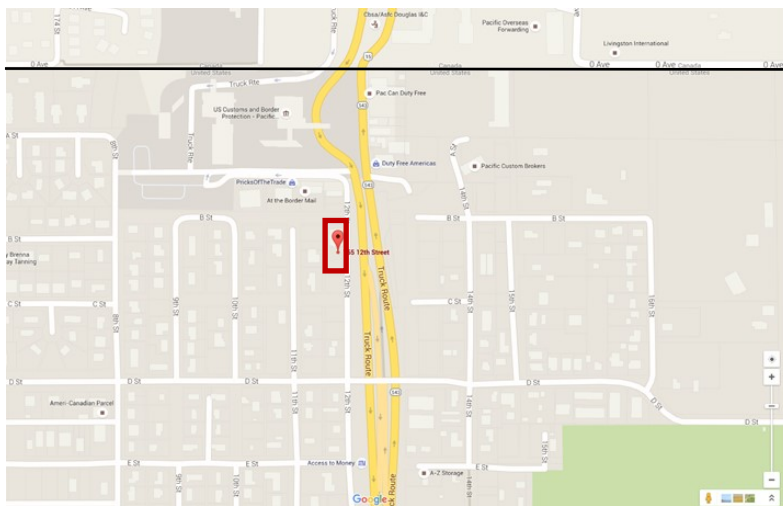
Professionally Managed Office Building

Open Floor Plan with Private Office

Ground floor

Kitchenette

Parking onsite



Contact

Hannah Cano
360-676-4866
Hannah@saratogacom.com

155 12th Street, Suite 102

PROPERTY FACT SHEET

Address: 155 12th Street, Suite 102

Site: 24000 sq. ft.

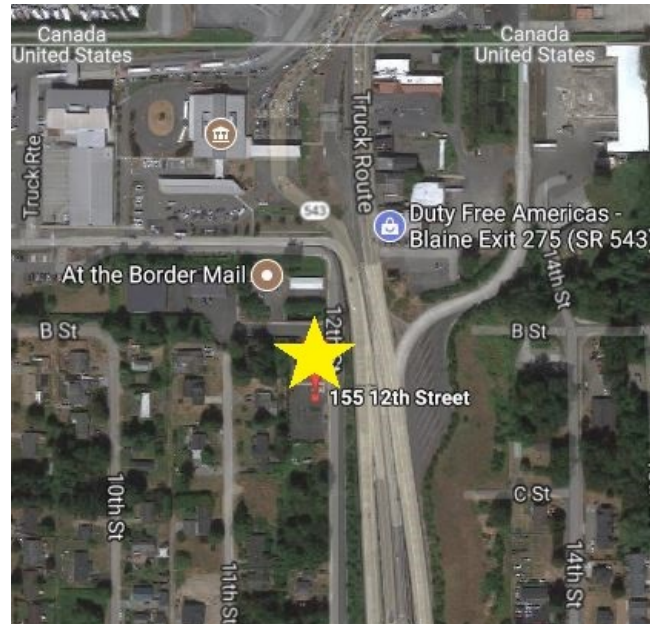
Zoning: Commercial

Building: Office

Year Built: 2006

Building Size: 8296 sq. ft.

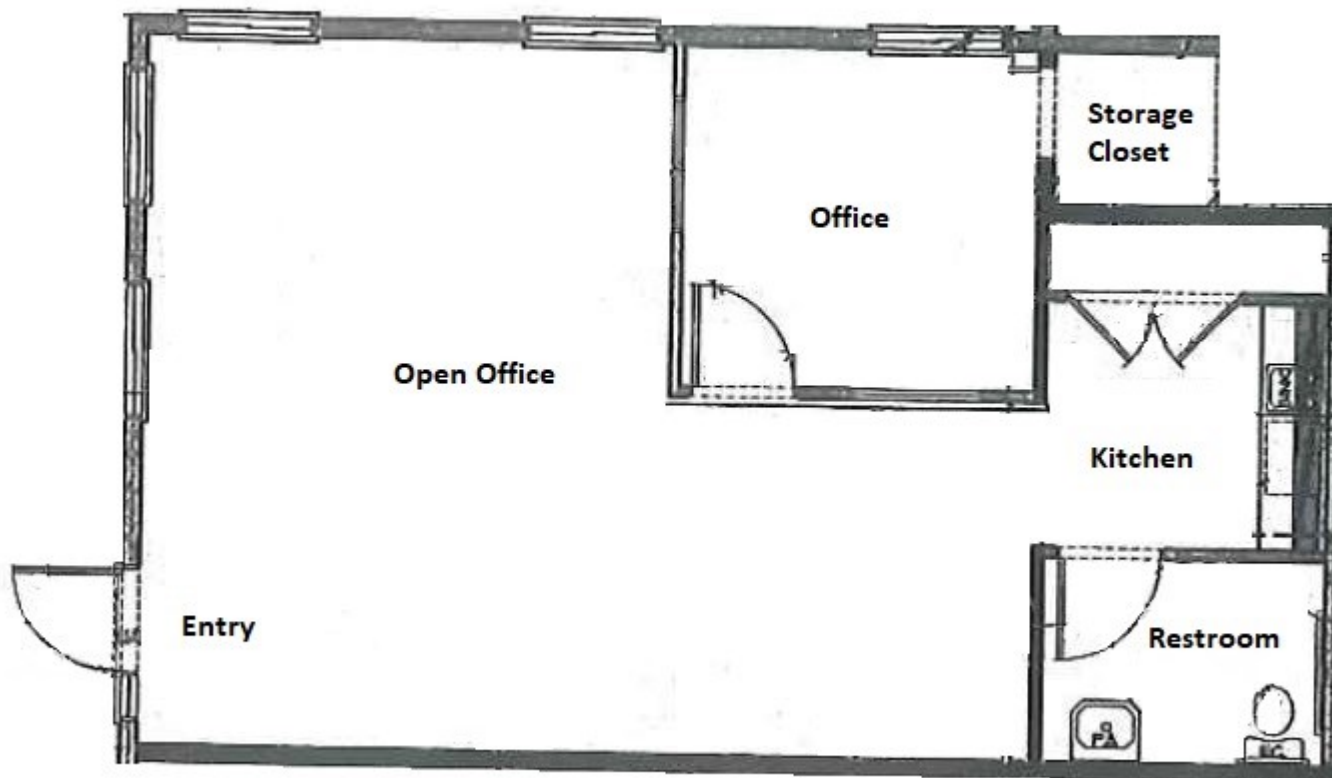
Parking: Shared Parking Lot



Contact

Hannah Cano
360-676-4866
hannah@saratogacom.com

155 12th Street, Suite 102



Contact

Hannah Cano
360-676-4866
hannah@saratogacom.com