

Squalicum Business Park

3560 Meridian St,
Bellingham, WA 98225

5,916 SF (available now)

\$16/SF/YR + NNN

Dock high loading in rear

Easy Access to I-5

33,000 cars per day

Excellent Parking

Monument/Fascia Signage



Contact

Greg Martineau, CCIM
C (360) 820-4645
Q (360) 676-4866
greg@saratogacom.com

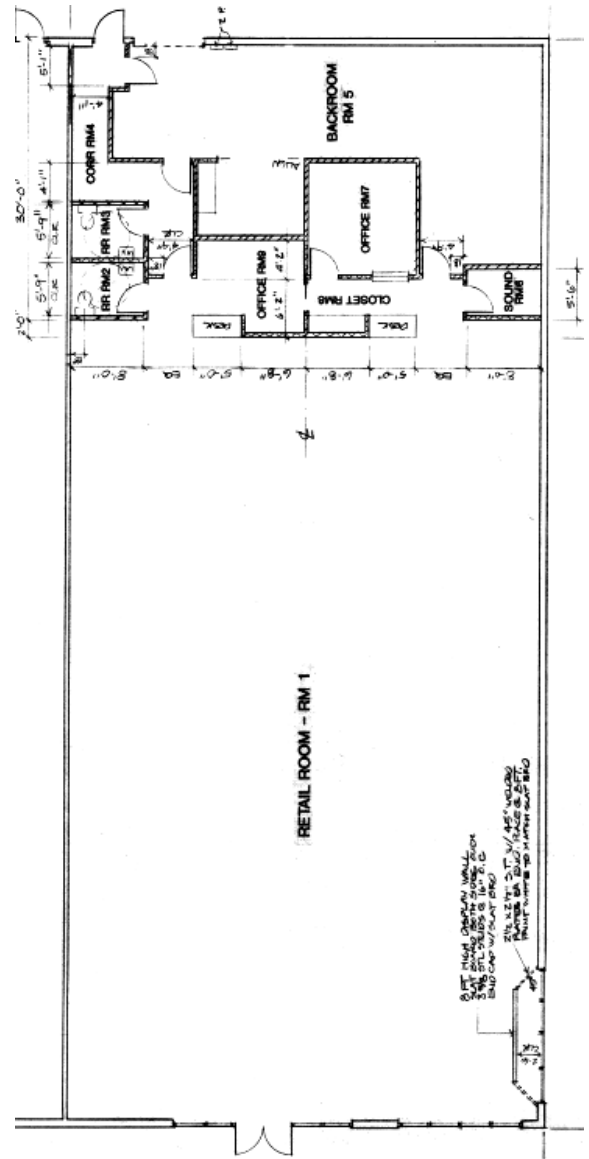


The information contained herein has been obtained from sources we deem reliable. We do not guarantee its accuracy. All info should be verified prior to purchase or lease.

Squalicum Business Park

PROPERTY FACT SHEET

Address:	3560 Meridian St, Bellingham
Zoning:	Retail, Medical, Office
Traffic Counts:	33,000+ cars per day
Ceiling Height:	16 feet
Loading Dock:	In rear of building
Telecommunications:	Wired for phone and high speed internet
Demographics:	Households: 1 mile: 4,235 3 miles: 27,037
HVAC:	Rooftop HVAC units, maintained quarterly
Signage:	Fascia & Monument
Asphalt:	Excellent condition



Contact

Greg Martineau, CCIM
 C (360) 820-4645
 Q (360) 676-4866
 greg@saratogacom.com