

2,038 Square Feet  
Office Space Available

325 George Hopper Road, Burlington, WA  
Near Burlington Boulevard

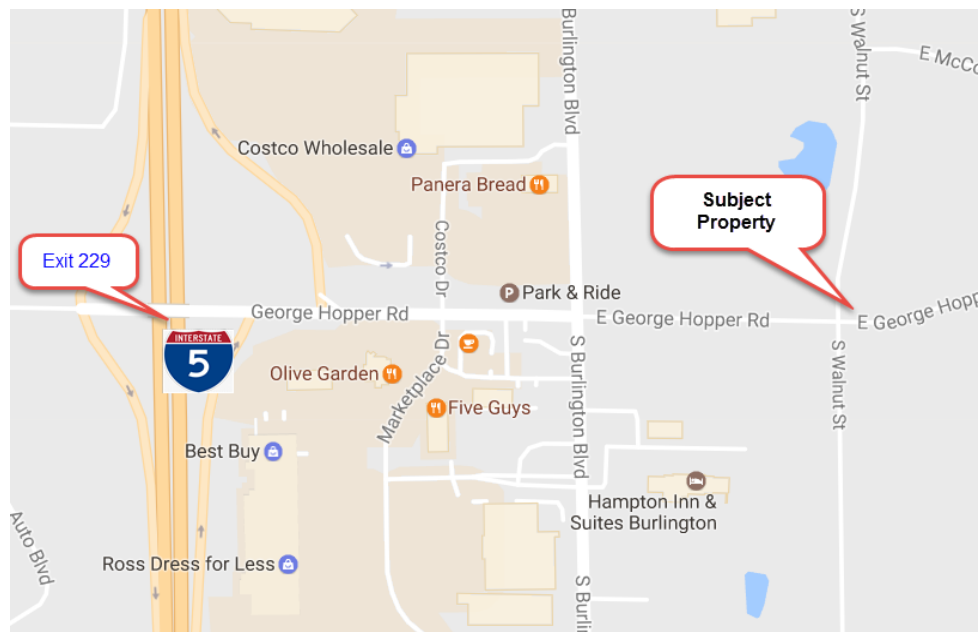


## Contact

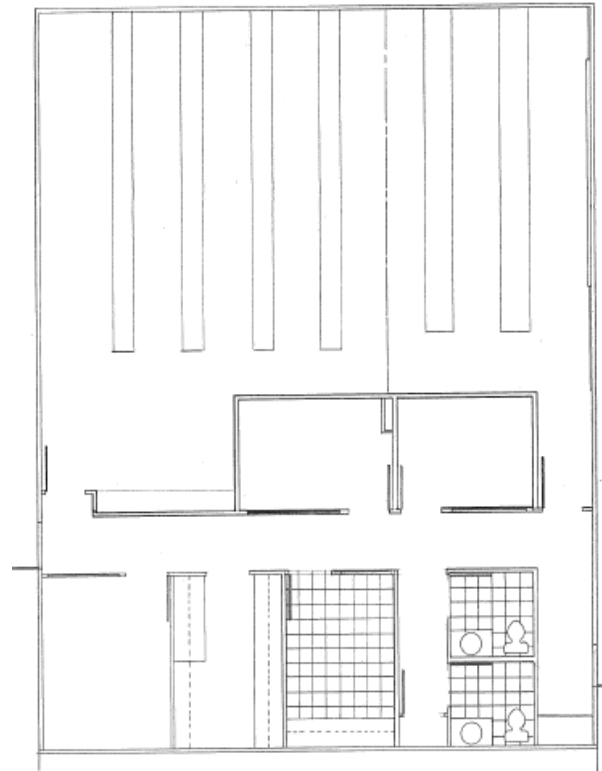
**Ken Reinschmidt, CCIM**  
360-676-4866  
ken@saratogacom.com

**Lauralee Carbone**  
360-676-4866  
lauralee@saratogacom.co

- \$19.50 per square foot + NNN
- 2,038 SF Office Space
- Multi Tenant
- Ample parking
- Signage opportunities
- Modern building
- Professionally managed
- Elevator served



**Space Configuration**



2,038 SF



**Contact**

**Ken Reinschmidt, CCIM**  
360-676-4866  
ken@saratogacom.com

**Lauralee Carbone**  
360-676-4866  
Lauralee@saratogacom.co

