

## Cordata Business Park

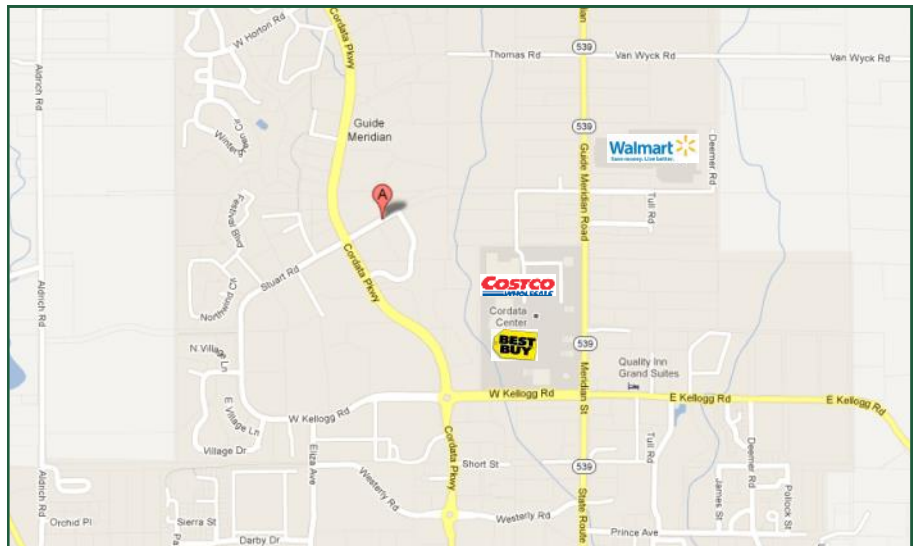
465 Stuart Road  
Bellingham, WA 98226

\$11- \$15 per SF + NNN

4,000-12,600 Rentable SF

On-Site Parking

Available Now



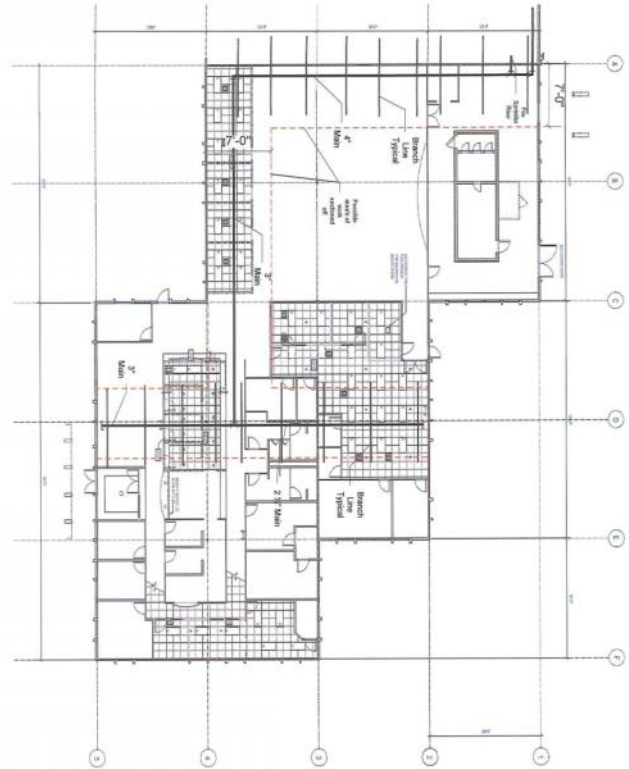
### Contact

**Lauralee Carbone**  
360-676-4866  
lauralee@saratogacom.com

## Cordata Business Park

### PROPERTY FACT SHEET

<b>Address:</b>	465 E. Stuart Road
<b>Site:</b>	2.24 Acres
<b>Zoning:</b>	Commercial
<b>Year Built:</b>	1992
<b>Building Size:</b>	28,000 SF
<b>Class:</b>	A
<b>NNN:</b>	\$3.00
<b>Signage:</b>	Free Standing
<b>Demographics:</b>	1/3/5mi 4,787/36,040/83,851
<b>Traffic Counts:</b>	9,000/day
<b>Sprinkler System:</b>	Yes



### Contact

**Lauralee Carbone**  
360-676-4866  
lauralee@saratogacom.com