

Puget Sound Energy Building

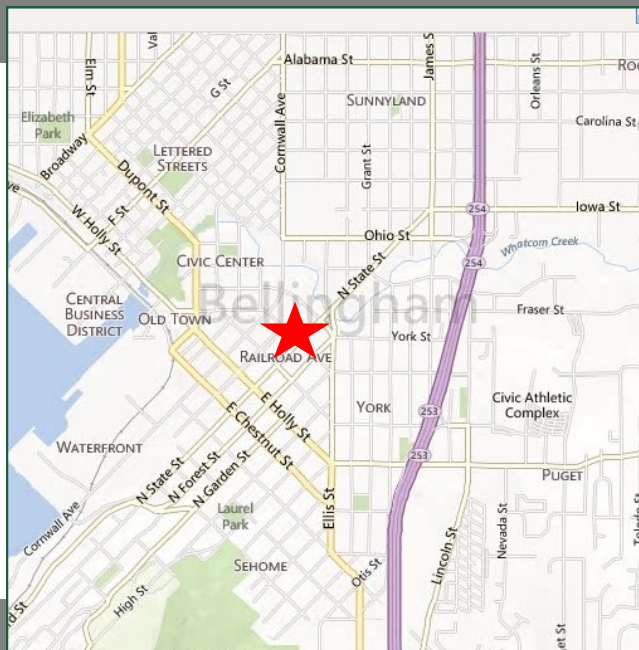
1327 N. State Street, Bellingham

For Lease



Features

- Full Service Gross Lease
- \$22/SF Office Space
572 — 3,252 Square Feet
- \$27/SF Single Office Spaces
210 — 283 Square Feet
- Newly renovated with attention to historic detail
- Bellingham Landmark Building



Contact

Hannah Cano
360-676-4866
hannah@saratogacom.com

Puget Sound Energy Building

PROPERTY FACT SHEET

Address:	1327 N. State Street	Traffic Counts:	7,300 /day
Site:	.5 Acres	Sprinkler System:	No
Zoning:	Fringe- Commercial	Elevator:	Yes
Year Built:	1920	Parking:	Available
Building Size:	30,000	Lease Type:	Gross

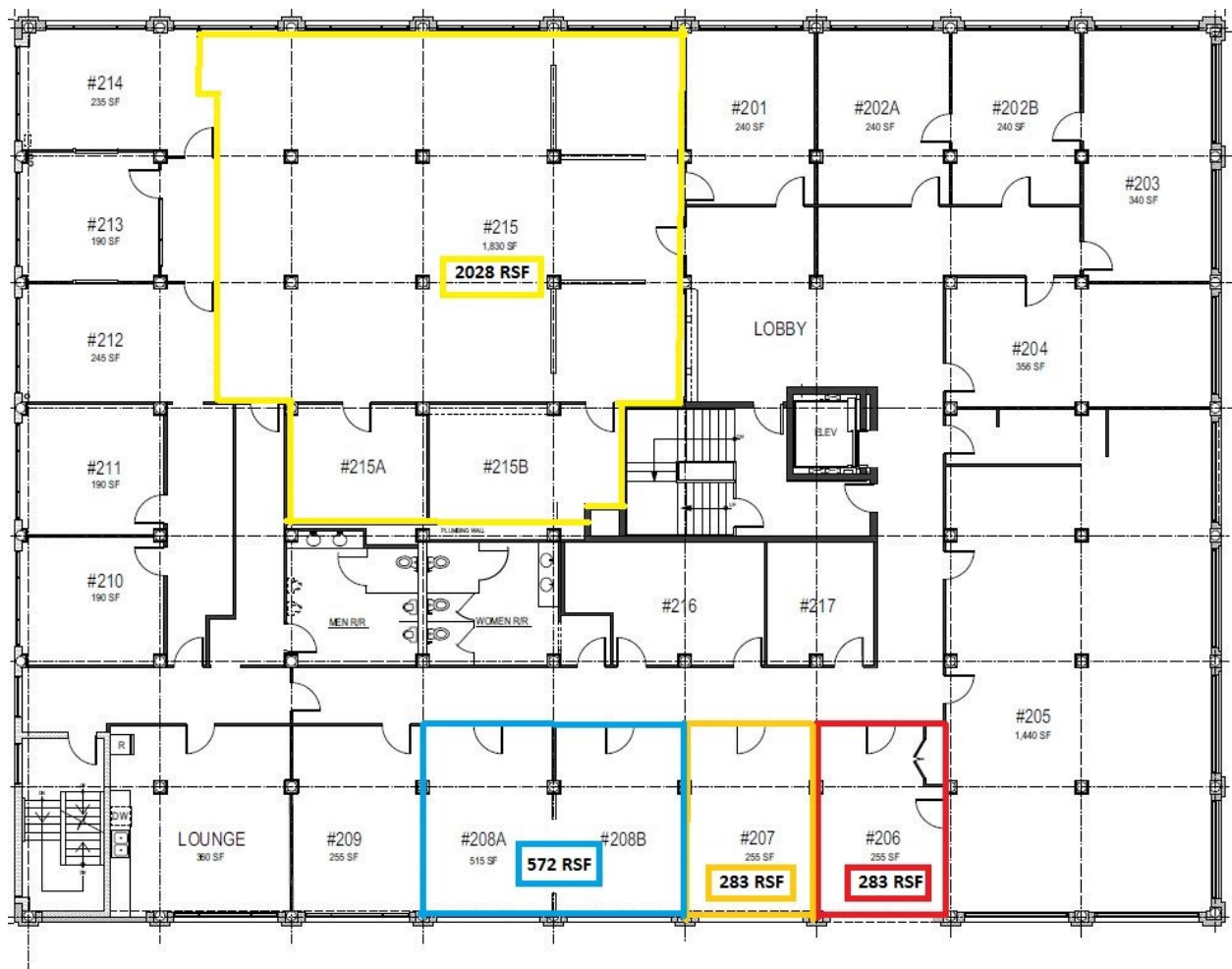


Contact

Hannah Cano
360-676-4866
hannah@saratogacom.com

Puget Sound Energy Building

SECOND FLOOR PLAN



1327 North State Street

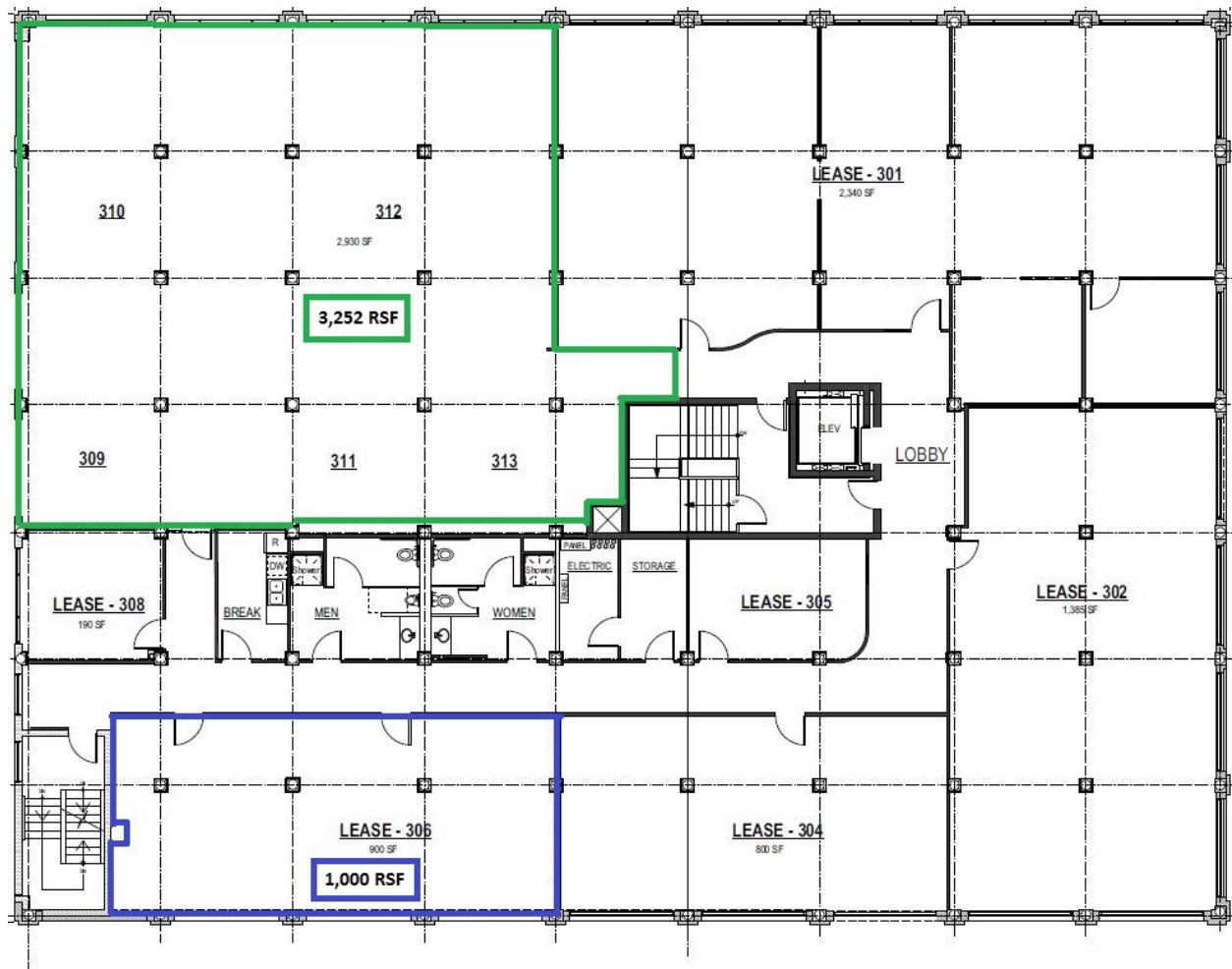
Second Floor Plan 

Contact

Hannah Cano
360-676-4866
hannah@saratogacom.com

Puget Sound Energy Building

THIRD FLOOR PLAN



1327 North State Street

Third Floor Plan



Contact

Hannah Cano
360-676-4866
hannah@saratogacom.com