

**Meridian Place  
Bellingham, WA**



**Features:**

- 1,336 & 1710 Square feet
- \$13/sf/yr + NNN
- Retail or Office
- Close to I5 exit 256A-256B
- Ample Parking
- ADA accessible
- Flexible floor plan configurations



**Contact**

**Kara Lackey**  
360-676-4866  
kara@saratogacom.com

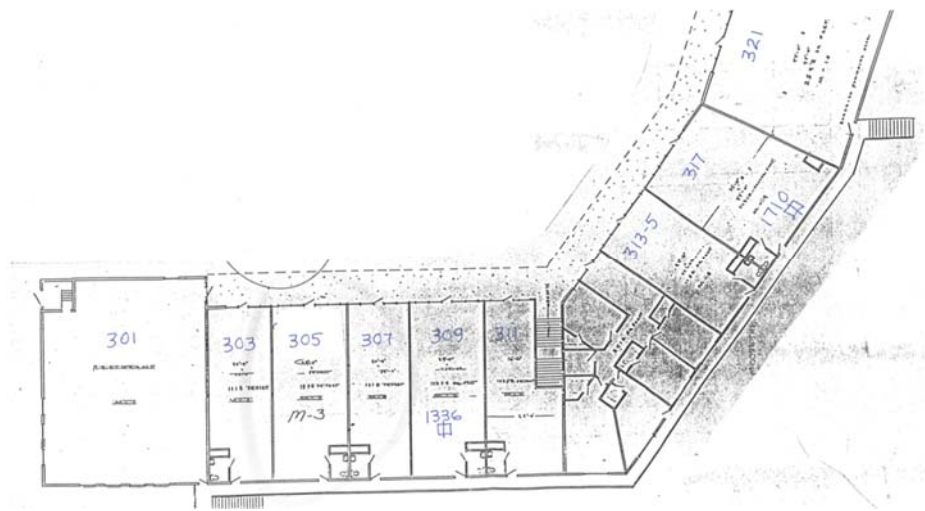
First Floor



Property Fact Sheet

Address:	301—321 Telegraph Rd
Zoning:	Urban Village
Building:	2-story office building
Parking:	Shared and In Common
Elevator:	No

Second Floor



Contact

**Kara Lackey**  
360-676-4866  
kara@saratogacom.com