

## Squalicum Business Park

3560 Meridian St,  
Bellingham, WA 98225

5,916 SF (available now)

\$15/SF/YR + NNN

Dock high loading in rear

Easy Access to I-5

33,000 cars per day

Excellent Parking

Monument/Fascia Signage

<http://squalicumbusinesspark.com>



### Contact

**Greg Martineau, CCIM**  
C (360) 820-4645  
Q (360) 676-4866  
greg@saratogacom.com



*The information contained herein has been obtained from sources we deem reliable. We do not guarantee its accuracy. All info should be verified prior to purchase or lease.*

## Squalicum Business Park

### PROPERTY FACT SHEET

**Address:** 3560 Meridian St, Bellingham

**Zoning:** Retail, Medical, Office

**Traffic Counts:** 33,000+ cars per day

**Ceiling Height:** 16 feet

**Loading Dock:** In rear of building

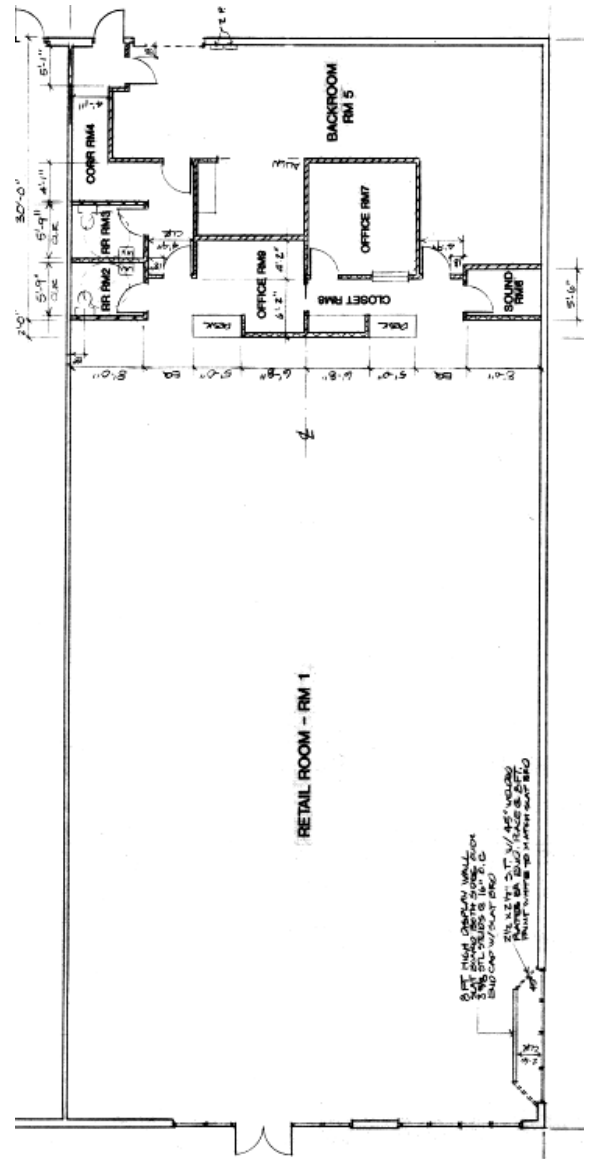
**Telecommunications:** Wired for phone and high speed internet

**Demographics:**  
Households:  
1 mile: 4,235  
3 miles: 27,037

**HVAC:** Rooftop HVAC units, maintained quarterly

**Signage:** Fascia & Monument

**Asphalt:** Excellent condition



### Contact

**Greg Martineau, CCIM**  
 C (360) 820-4645  
 Q (360) 676-4866  
 greg@saratogacom.com