

1750 Moore Street

Bellingham, WA

INDUSTRIAL STAND-ALONE BUILDING

\$0.67/SF/MO + NNN

14,682 SF TOTAL

1,250 SF Office

13,432 SF Warehouse

<0.5 miles to I-5

Ample Parking

(2) Grade Level Roll Up Doors

Loading well



Contact

Amia Froese, CCIM
360-676-4866
amia@saratogacom.com

1750 Moore Street

PROPERTY FACT SHEET

Address: 1750 Moore Street

Site: 0.74 Acres

Zoning: Industrial

Building: Metal

Year Built: 1970

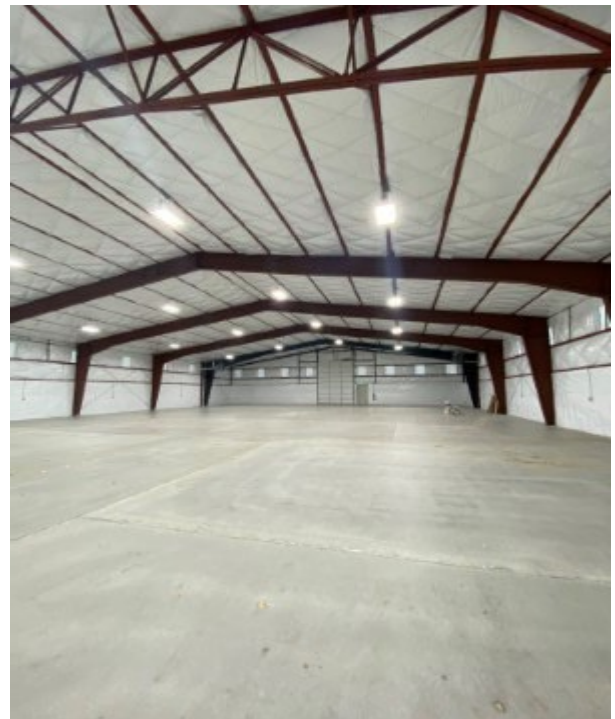
Building Size: 14,638 SF

Doors: (2) Grade Level

Parking: On Site

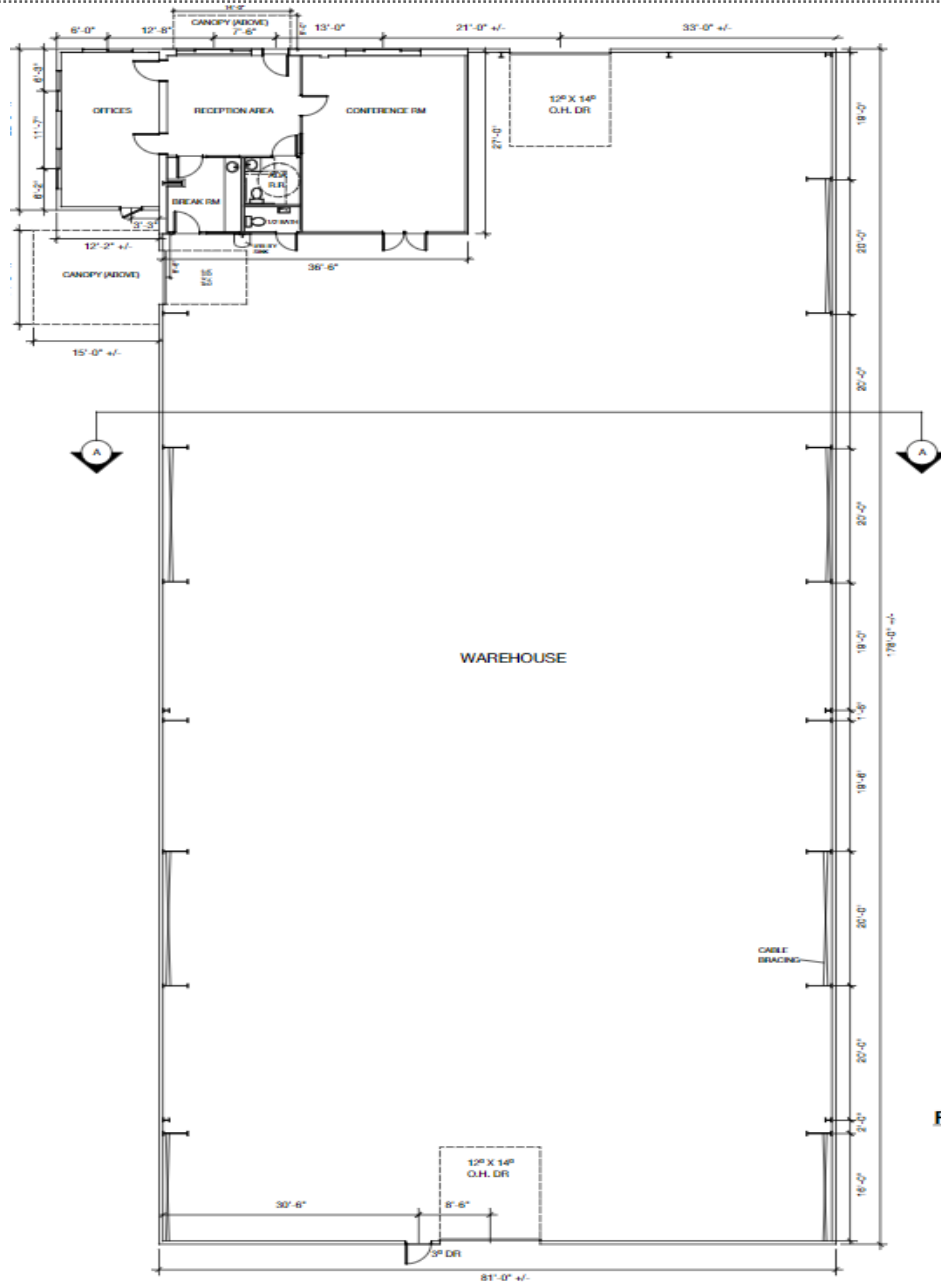
Ceiling Height: 22' peak, 15' eaves

Sprinkler System: No



Contact

Amia Froese, CCIM
360-676-4866
amia@saratogacom.com



Contact

Amia Froese, CCIM
360-676-4866
amia@saratogacom.com