

1030 Riverside Dr. Mt. Vernon, WA

- 8051 SF
 - 7071 SF - warehouse
 - 980 SF - office
- \$0.78 SF + NNN
- Concrete tilt-up distribution space
- Zoned M-1. Light Manufacturing and Commercial District
- Large 15,500 SF parking area
- 3 Above Grade Loading Docks
- Internal/External Energy Efficient Lighting Systems
- 16' - 18' Ceiling height
- Security and Fire Alarm Monitoring in Place



Contact

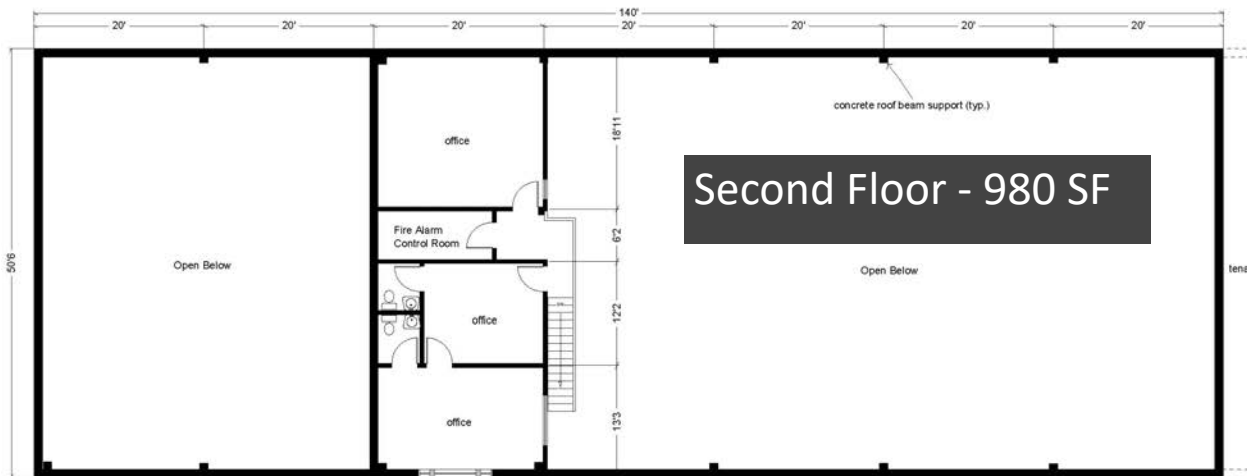
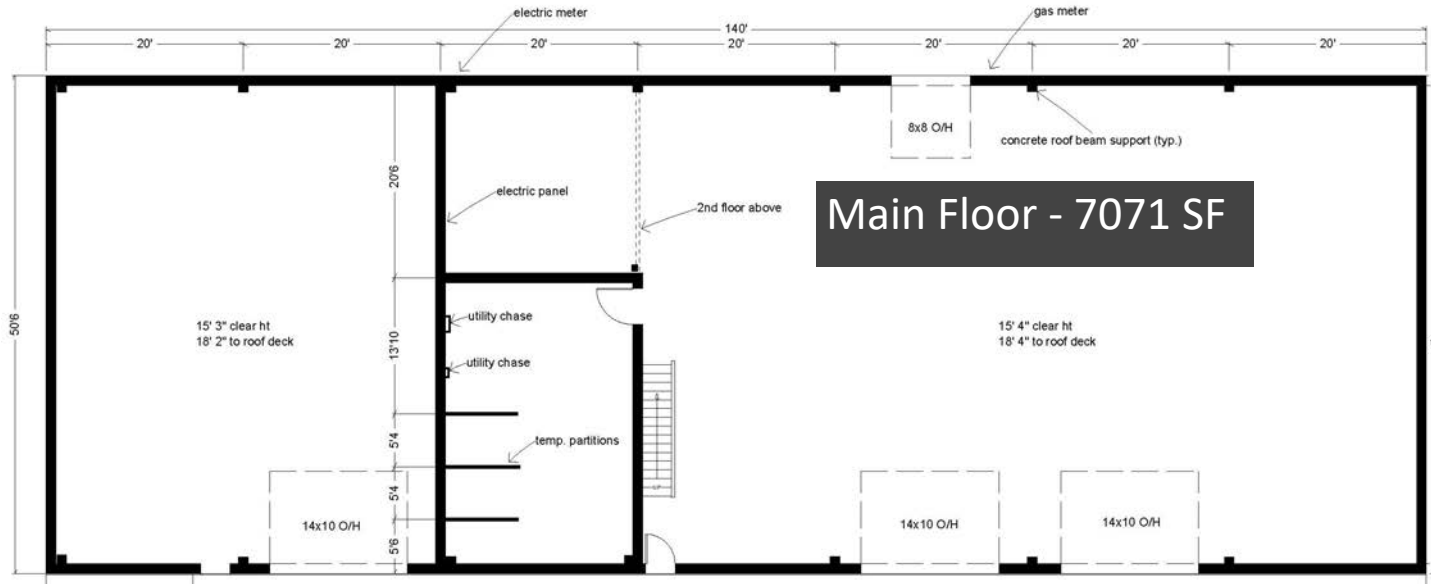


David Buckner
360-927-4992
David@SaratogaCom.com



Greg Martineau
360-820-4645
Greg@GageCRE.com





Contact

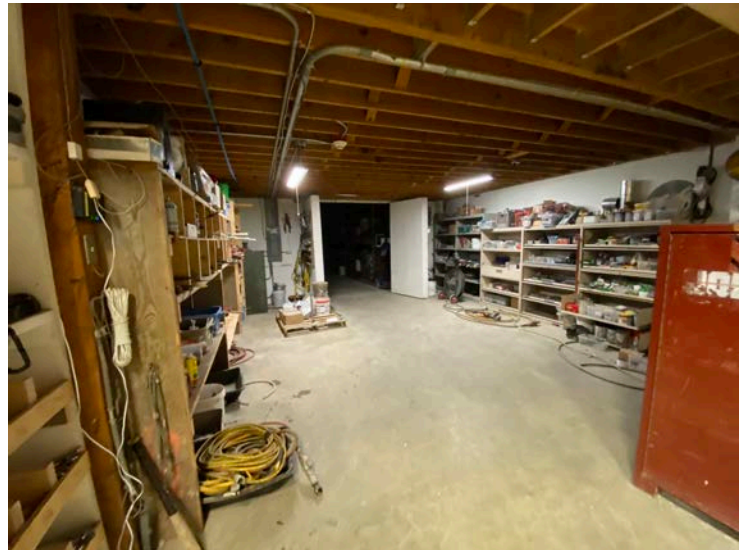


David Buckner
360-927-4992
David@SaratogaCom.com



Greg Martineau
360-820-4645
Greg@GageCRE.com





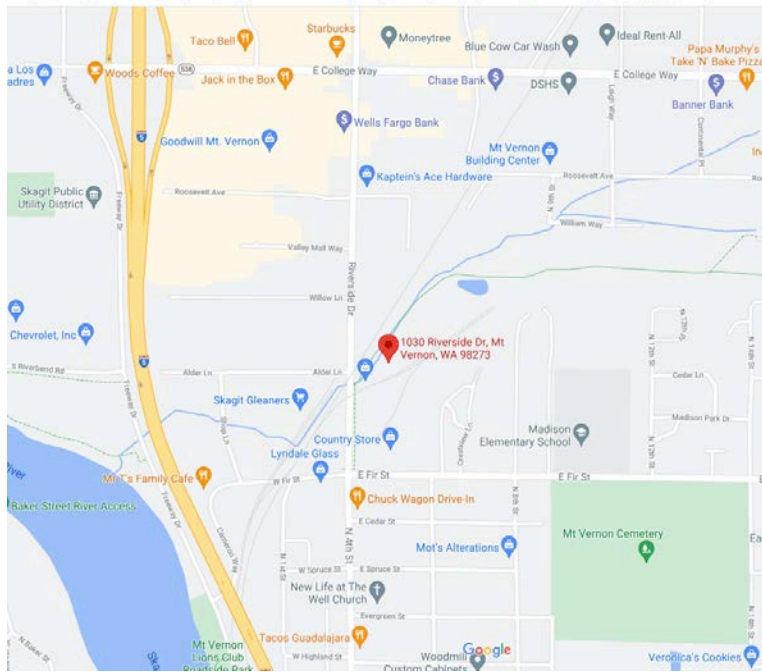
Contact



David Buckner
360-927-4992
David@SaratogaCom.com

Greg Martineau
360-820-4645
Greg@GageCRE.com





Contact



David Buckner
360-927-4992
David@SaratogaCom.com



Greg Martineau
360-820-4645
Greg@GageCRE.com

