

1030 Riverside Dr. Mt. Vernon, WA

- **8000 SF**
 - 7000 SF - warehouse
 - 1000 SF - office
- **\$0.78 SF + NNN**
- **Concrete tilt-up distribution space**
- **Zoned M-1. Light Manufacturing and Commercial District**
- **Large 15,500 SF parking area**
- **3 Above Grade Loading Docks**
- **Internal/External Energy Efficient Lighting Systems**
- **16' - 18' Ceiling height**
- **Security and Fire Alarm Monitoring in Place**



Contact

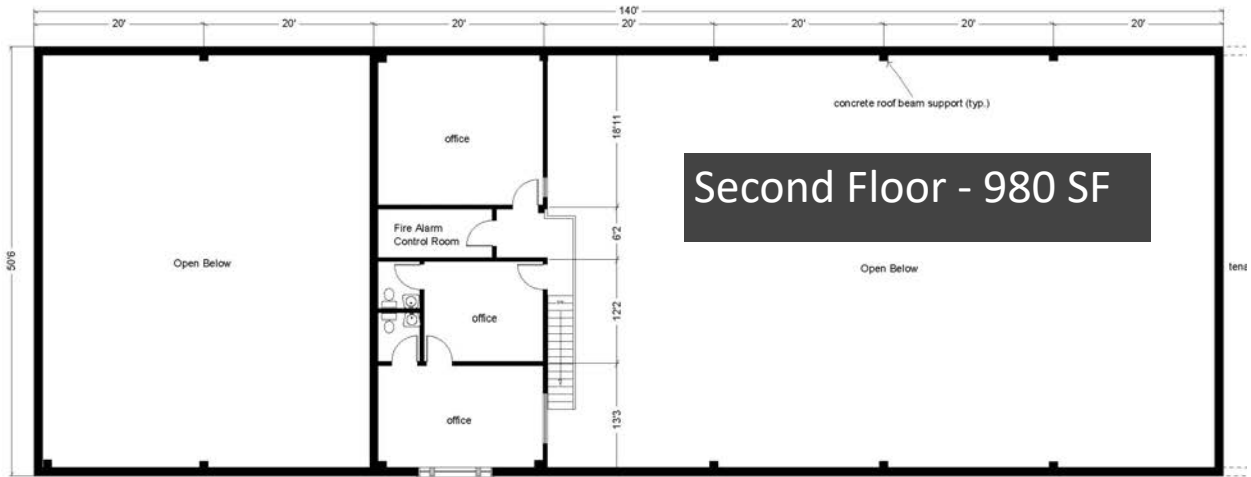
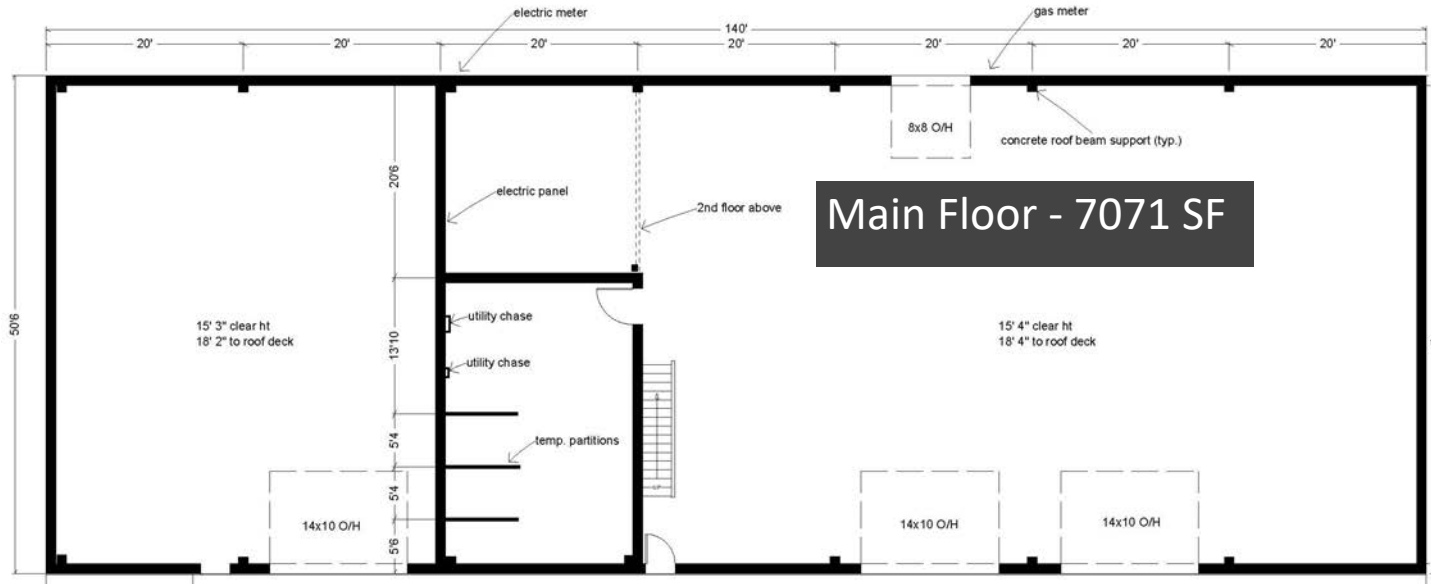


David Buckner
360-927-4992
David@SaratogaCom.com



Greg Martineau
360-820-4645
Greg@GageCRE.com





Contact

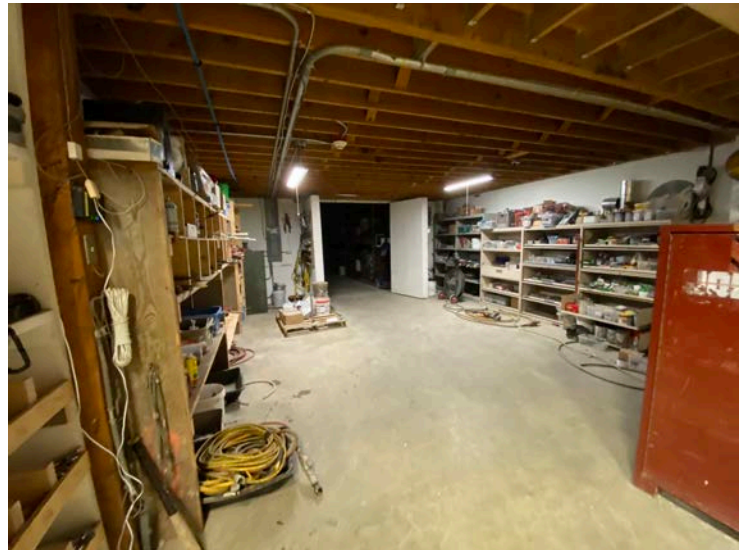


David Buckner
360-927-4992
David@SaratogaCom.com



Greg Martineau
360-820-4645
Greg@GageCRE.com





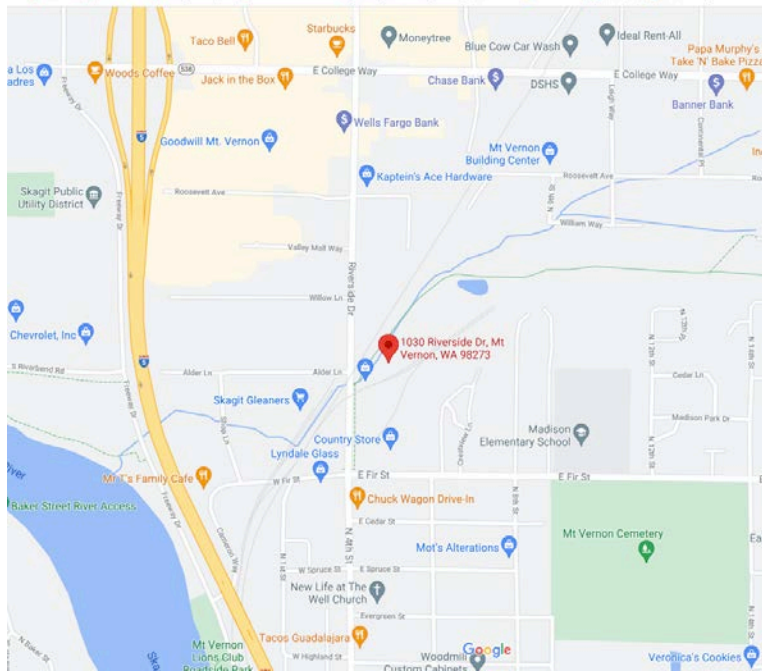
Contact



David Buckner
360-927-4992
David@SaratogaCom.com

Greg Martineau
360-820-4645
Greg@GageCRE.com





Contact



David Buckner
360-927-4992
David@SaratogaCom.com



Greg Martineau
360-820-4645
Greg@GageCRE.com

