

**INDUSTRIAL
FOR LEASE**

SARATOGA

HASKELL BUSINESS CENTER

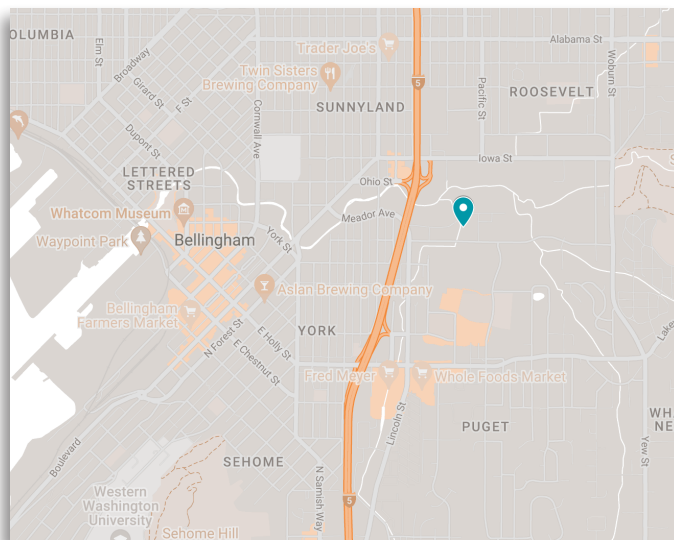
1420 MEADOR AVE, BELLINGHAM

SUITE K-103

\$10.82/SF/YR + NNN

2,400 SQUARE FEET

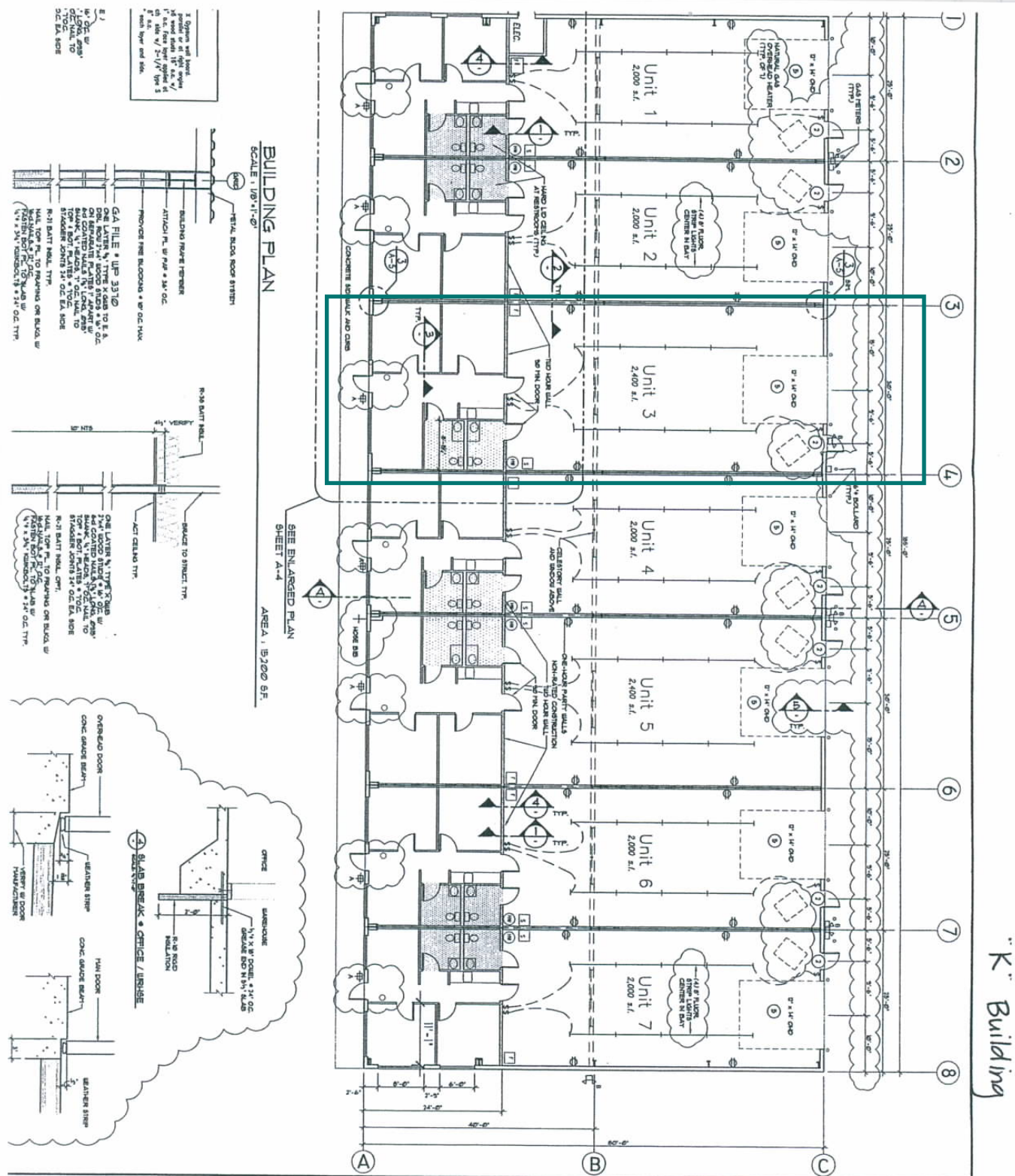
- *Grade level rollup door*
- *Two Private offices*
- *Ample parking*
- *Close to I-5*
- *Zoning: industrial*



Jaime Farrar
jaime@saratogacom.com
360.488.2903

www.saratogacom.com
228 E CHAMPION, STE 102, BELLINGHAM, WA 98225

INFORMATION CONTAINED HEREIN HAS BEEN OBTAINED FROM SOURCES DEEMED RELIABLE, BUT NOT GUARANTEED. LESSEE TO VERIFY.



"K" Building

A New Industrial Building For		BUILDING PLAN AND DETAILS		REGISTERED ARCHITECT		ARCHITECTS		<small>The drawings and plans set forth on this sheet are instruments of service and shall not be used for any other purpose without the prior written consent of the architect. The architect shall not be held responsible for any errors or omissions on the part of any contractor or subcontractor. The architect shall not be held responsible for any damage to property or persons caused by the use of the drawings and plans set forth on this sheet.</small>	
JIT Company		1420 MEADOR AVENUE		THOMAS E. CRISTO STATE OF WASHINGTON		ARCHITECTS 1380 678-6201		SHEET NO. 10 TOTAL SHEETS 12 DATE: JAN 81 DRAWN BY: [] CHECKED BY: [] APPROVED BY: []	



